

SW Elevation Tenant Specifications: Section 4

South Elevation
Tenant Signage Specifications: Architectural Tower Features

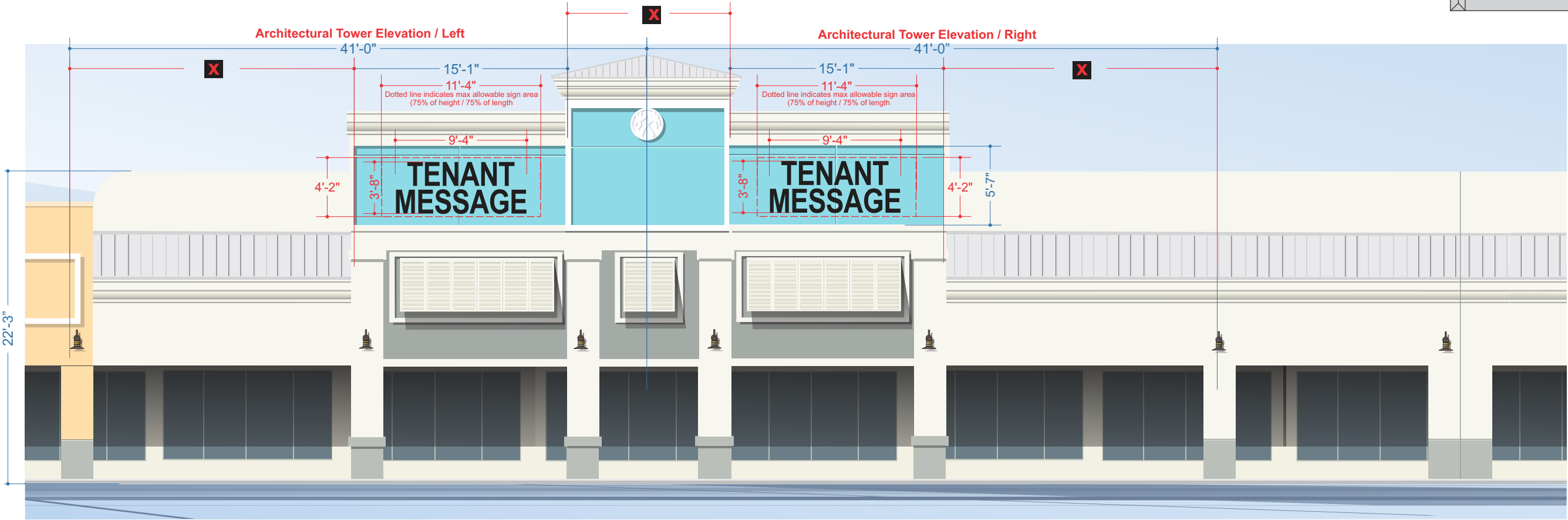
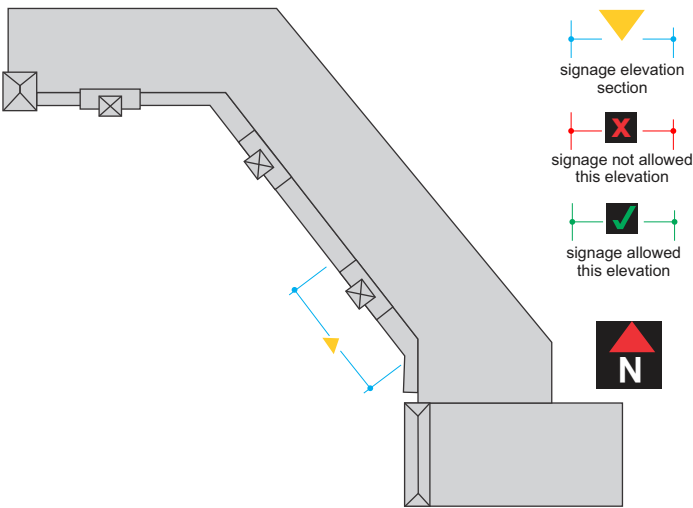
Square Footage Requirements:
10% of tenants frontage along building facade.
Frontage is calculated as the height of facade multiplied
by the length of the facade.

"Architectural Tower Elevation / Left" Tenant Elevation signage sq ft allowable:
 $22'-3" \times 34'-8" (34.6667) = 771.33 \text{ sq ft} \times 10\% = 77.13 \text{ sq ft}$
Example: $3'-8" (3.6667) \times 9'-4" (9.3333) = 34.22 \text{ sq ft}$

"Architectural Tower Elevation / Right" Tenant Elevation signage sq ft allowable:
 $22'-3" (22.25) \times 34'-8" (34.6667) = 771.33 \text{ sq ft} \times 10\% = 77.13 \text{ sq ft}$
Example: $3'-8" (3.6667) \times 9'-4" (9.3333) = 34.22 \text{ sq ft}$



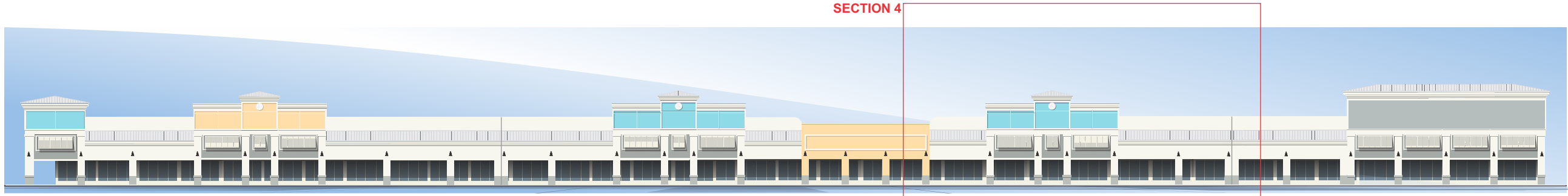
Example: Dual Use tenants on Architectural Tower Element
Dual use tenants shall use the designated facade areas of the Architectural Tower Feature, as shown



Southwest Elevation: Section 4

Note: The elevations shown depict "typical" examples of tenant signage, placements and storefront lengths to help guide tenants with detailed information on message sizes and placement onto the tenants elevation.
The examples of tenant storefront elevation measurements shown in this MSP may change depending on tenant needs and availability of leasing requirements. Final Leased lengths will determine an adjusted allowable square footage calculations for tenant signage per City of Pompano Beach Sign Code

SCALE: 1/8"=1'-0"



Palm Plaza Elevation

Note: The elevations shown depict "typical" examples of tenant signage, placements and storefront lengths to help guide tenants with detailed information on message sizes and placement onto the tenants elevation.
The examples of tenant storefront elevation measurements shown in this MSP may change depending on tenant needs and availability of leasing requirements. Final Leased lengths will determine an adjusted allowable square footage calculations for tenant signage per City of Pompano Beach Sign Code

AAC
PZ24-3000006



Glen Welden & Associates, LLC
3200 N FEDERAL HIGHWAY, SUITE 206-11 BOCA RATON FLORIDA 33431
email: gwadesign@gmail.com
website: gwelden.com

project name:



project address:
1400-1450 South Powerline Road
Pompano Beach Florida

date:
03/04/25

scope of work:
Master Sign Plan for Palm Place

client

notes

- 1. x
- 2. x
- 3. x

page:

10.0